

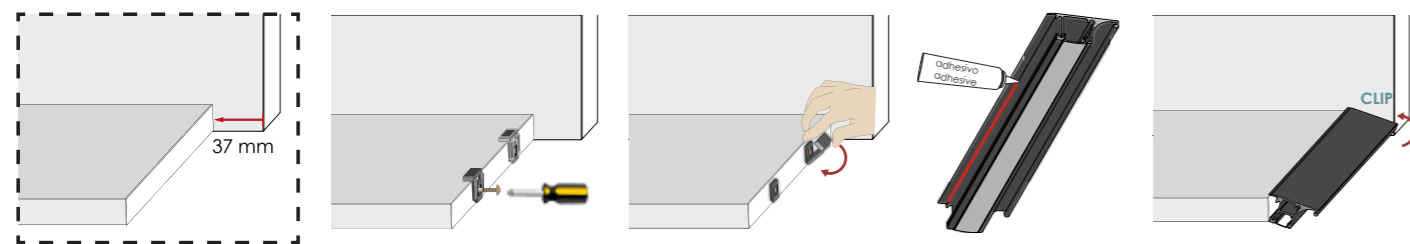
LED Perfil Gola - *mueble alto*



El Perfil Gola Rincomatic para Muebles Altos es un sistema de apertura para puertas y frentes de los muebles superiores. El perfil Gola permanece oculto facilitando la apertura del frente desde la parte inferior. Dispone de alojamiento para luz LED para iluminar el plano de trabajo

Gola Profiles for Upper cabinets are an opening system for doors and fronts located in the upper cabinets. Its function is to facilitate the opening of doors from the bottom. This version has housing to accommodate LED strips to light the worktop or counter.

CLIP-SYSTEM Instalación | Installation



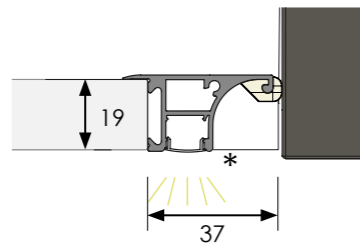
Reducir 37 mm de la profundidad de la base de módulo
Reduce 37 mm the cabinet base depth

Acabados | Finishes

35 Plata Mate Matt Silver	50 Inox Mate Champ. Matt Inox Champ.
52M Negro Mate Matt Black	61MTXT Antracita Textur. Anthracite Textur.
70M Oro Mate Matt Gold	01MTXT Blanco Mate Textur. Matt White Textur.

Medidas | Specifications

L2 - 2670 mm (105 1/8 in)
L3 - 2400 mm (94.5 in)



Tablero de 19 mm.
*Pantalla difusora incluida. LED no incluido
19 mm board.
*Diffuser screen included. LED not included

Tope | Bumper



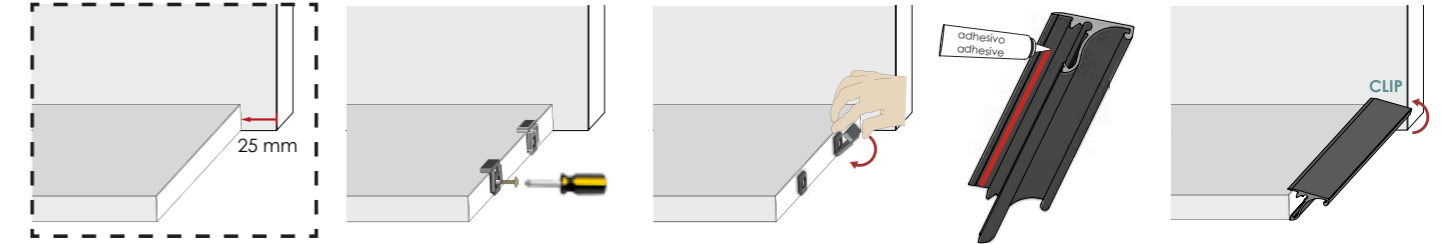
Perfil Gola - *mueble alto*



El Perfil Gola Rincomatic para Muebles Altos es un sistema de apertura para puertas y frentes de los muebles superiores. El perfil Gola permanece oculto facilitando la apertura del frente desde la parte inferior.

Gola Profiles for Upper cabinets are an opening system for doors and fronts located in the upper cabinets. They remain hidden behind the front and their function is to provide ease when opening upper doors from the bottom

CLIP-SYSTEM Instalación | Installation



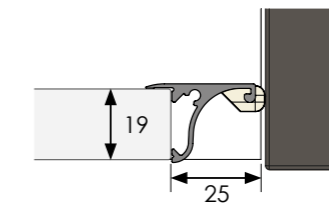
Reducir 25 mm de la profundidad de la base de módulo
Reduce 25 mm the cabinet base depth

Acabados | Finishes

35 Plata Mate Matt Silver	50 Inox Mate Champ. Matt Inox Champ.
52M Negro Mate Matt Black	61MTXT Antracita Textur. Anthracite Textur.
70M Oro Mate Matt Gold	01MTXT Blanco Mate Textur. Matt White Textur.

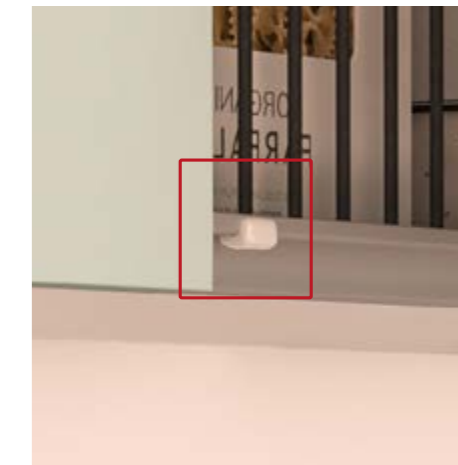
Medidas | Specifications

L2 - 2670 mm (105 1/8 in)
L3 - 2400 mm (94.5 in)



Tablero de 19 mm.
19 mm board.

Tope | Bumper



Formulario de Pedido Descarga, completa y envía
Order Form Download, complete and send

ESP



ENG



Formulario de Pedido Descarga, completa y envía
Order Form Download, complete and send

ESP



ENG

