

# Syma5 EDGE Integrado Parcial



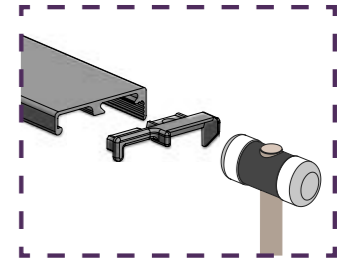
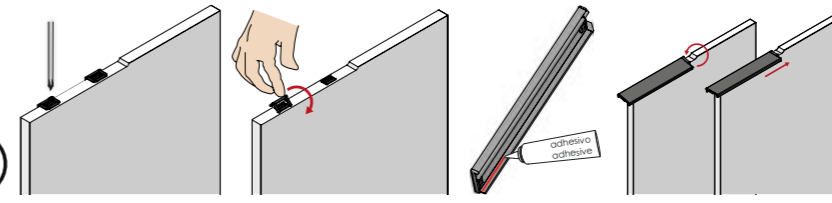
La combinación de tiradores **Syma5 EDGE integrado parcialmente** de mano izquierda y derecha permite conseguir proyectos variados. Idóneo para cocinas modernas, aplicaciones comerciales y residenciales, etc.

The combination of **Syma5 EDGE partially integrated** left- and right-handed handles allows the achievement of various projects. Ideal for modern kitchens, commercial and residential applications, etc.

## Acabados | Finishes

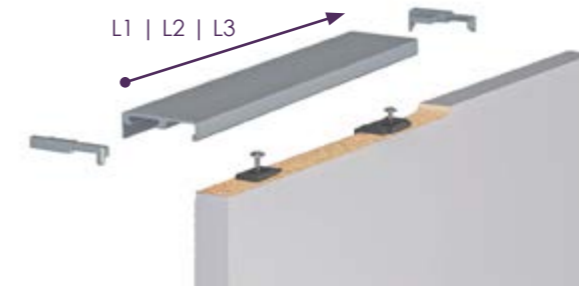
35 Plata Mate Matt Silver	50 Inox Mate Champ. Matt Inox Champ.	52M Negro Mate Matt Black	60 Antracita Anthracite	70M Oro Mate Matt Gold	01/01M Blanco: Brillo   Mate White: Gloss   Matt

## CLIP-SYSTEM Instalación | Installation



## Formatos de venta | Sales packaging

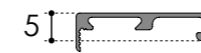
### > Por componentes | In parts - DIY



Válido para grueso tablero 19 mm (3/4 in)  
Valid for board thickness 19 mm (3/4 in)

L1 - 2950 mm (116 1/8 in)  
L2 - 2670 mm (105 1/8 in)  
L3 - 2400 mm (94.5 in)

### Syma5 EDGE Perfil | Profile



### Pareja terminales (L+R) + Clips + tornillos

Pair end caps (L+R)+ Clips + screws



### IZQUIERDO LEFT



### Pareja terminales (L+R) + Clips + tornillos

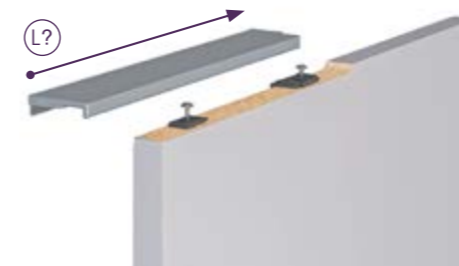
Pair end caps (L+R)+ Clips + screws



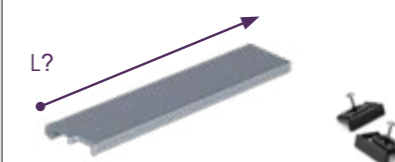
### DERECHO RIGHT



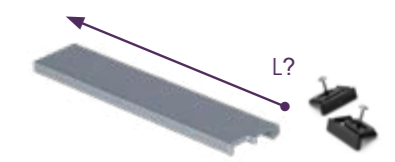
### > Tirador a medida | Custom-Made Handle



### IZQUIERDO Integrado Parcial LEFT Integrated Partial



### DERECHO Integrado Parcial RIGHT Integrated Partial



\* Solicite medida exacta | Ask for exact length



**Formulario de Pedido** Descarga, completa y envía  
**Order Form** Download, complete and send

