

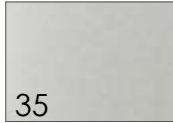


Syma5 EDGE Integrado Parcial



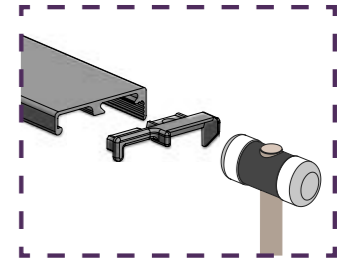
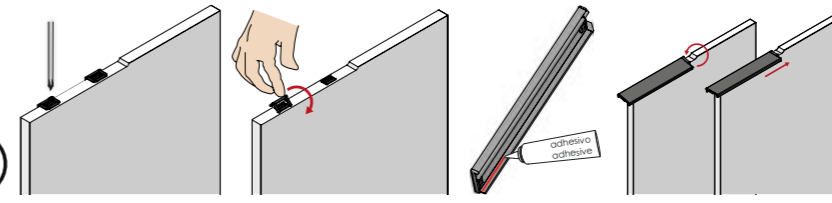
La combinación de tiradores **Syma5 EDGE integrado parcialmente** de mano izquierda y derecha permite conseguir proyectos variados. Idóneo para cocinas modernas, aplicaciones comerciales y residenciales, etc.

The combination of **Syma5 EDGE partially integrated** left- and right-handed handles allows the achievement of various projects. Ideal for modern kitchens, commercial and residential applications, etc.

Acabados | Finishes

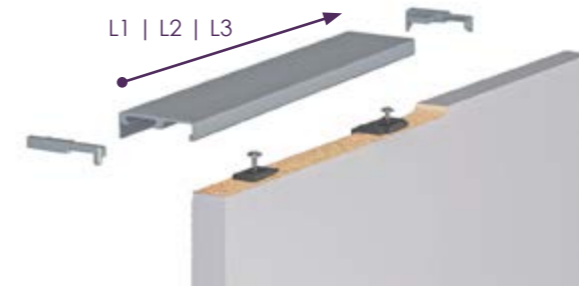
					
35 Plata Mate Matt Silver	50 Inox Mate Champ. Matt Inox Champ.	52M Negro Mate Matt Black	60 Antracita Anthracite	70M Oro Mate Matt Gold	01/01M Blanco: Brillo Mate White: Gloss Matt

CLIP-SYSTEM Instalación | Installation



Formatos de venta | Sales packaging

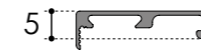
> Por componentes | In parts - DIY



Válido para grueso tablero 19 mm (3/4 in)
Valid for board thickness 19 mm (3/4 in)

L1 - 2950 mm (116 1/8 in)
L2 - 2670 mm (105 1/8 in)
L3 - 2400 mm (94.5 in)

Syma5 EDGE Perfil | Profile



Pareja terminales (L+R) + Clips + tornillos

Pair end caps (L+R)+ Clips + screws



IZQUIERDO LEFT



Pareja terminales (L+R) + Clips + tornillos

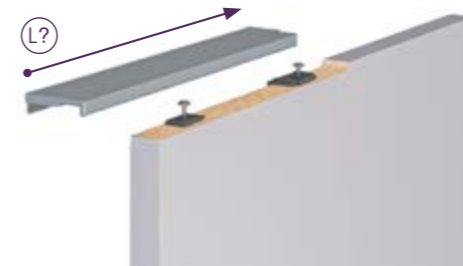
Pair end caps (L+R)+ Clips + screws



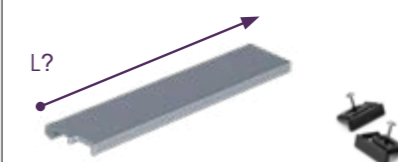
DERECHO RIGHT



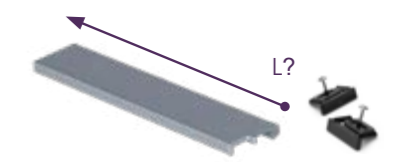
> Tirador a medida | Custom-Made Handle



IZQUIERDO Integrado Parcial LEFT Integrated Partial



DERECHO Integrado Parcial RIGHT Integrated Partial



* Solicite medida exacta | Ask for exact length



Formulario de Pedido Descarga, completa y envía
Order Form Download, complete and send

