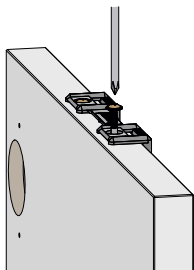


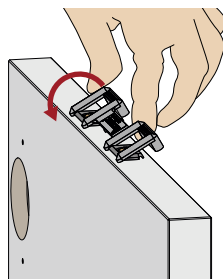
**1**

Colocar referencia apoyada en la cara exterior del frente y atornillar.  
Place the reference on the front side of the door or drawer and screw.  
Poser l'indicateur de position à la face frontal de la porte et visser.



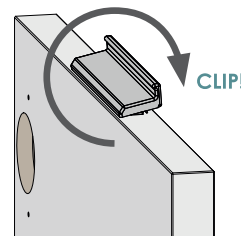
**2**

Quitar referencias  
Remove references  
Retirer les indicateurs de position



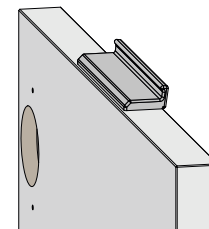
**3**

Posicionar el tirador desde la cara interior del frente.  
Place the handle from the back side of the door.  
Situer le pogné retenant par la face intérieure de la porte.

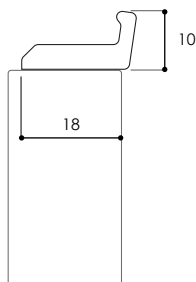


**4**

Girar y presionar hacia la cara exterior hasta oír ¡clip!  
Push handle down towards the front side until you hear clip!  
Tourner jusqu'au ¡clip!

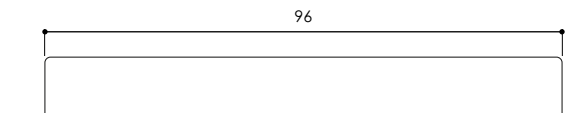


Medidas a considerar  
Measurements to consider  
Mesures à prendre en compte

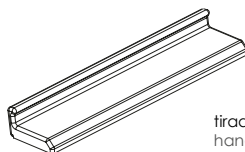


Grosor de la puerta superior a 18 mm  
Door's thickness higher than 18 mm  
Épaisseur de la porte supérieur à 18 mm

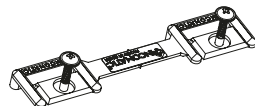
Longitud tirador 96 mm  
Handle length 96 mm  
Longueurs de poigné 96 mm



Componentes  
Components  
Composants



tirador  
handle  
poigné



Clip

Acabados  
Finishes  
Finitions

**35** plata mate  
matt silver  
argent mat

**05** níquel satinado  
brushed nickel  
nickel brossé

**04** plata brillo  
chrome - electropolished  
chrome - électro-poli

**02** negro brillo - lacado  
gloss black - lacker  
noir brillant - lacqué

**01** blanco brillo lacado  
gloss white - lacker  
blanc brillant - laqué

**50** inox mate  
matt inox - champagne  
inox mat - champagne

**26** cobre satinado  
brushed cooper  
cuivre brossé

**43** bronce satinado  
brushed bronze  
bronce brossé

**02M** negro mate - lacado  
matt black - lacker  
noir mat - lacqué

**01M** blanco mate lacado  
matt white - lacker  
blanc mat - laqué