

# gola

profiles

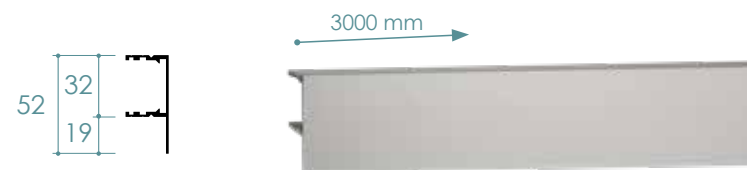


flat ■  
traditional ■  
customizable ■

perfil gola plano flat gola profile

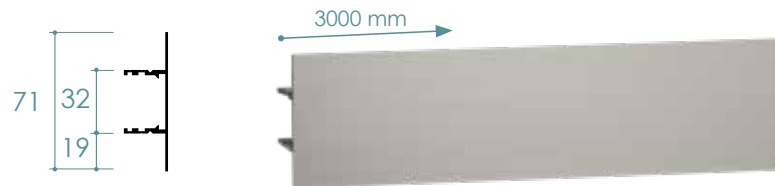


perfil gola plano superior-lateral | upper-side flat gola profile



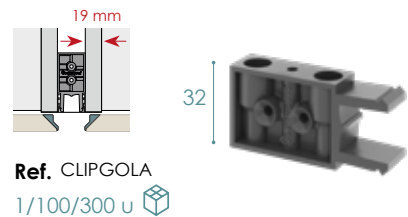
Ref. TGOLAP19S + Color | L. 3000 mm  
 Color 35·50·52/M·60·01/M | 14 u  
 Perfiles plastificados individualmente  
 Individually packed profiles

perfil gola plano intermedio | intermediate flat gola profile

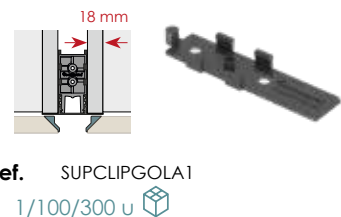


Ref. TGOLAP19I + Color | L. 3000 mm  
 Color 35·50·52/M·60·01/M | 12 u  
 Perfiles plastificados individualmente  
 Individually packed profiles

clip sujeción-compensación | fixing-balancing clip



Suplemento | Spacer 1 mm



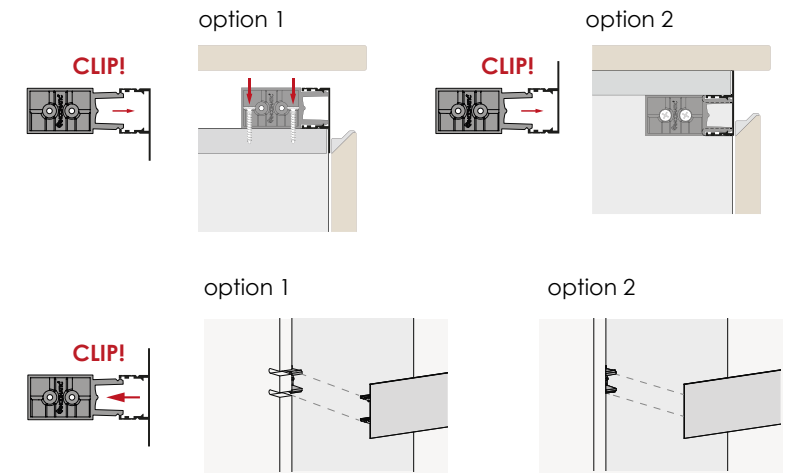
Suplemento | Spacer 3 mm



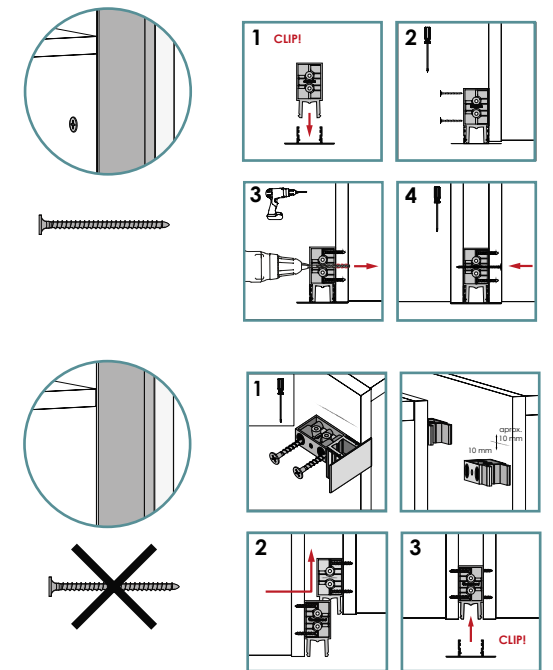
acabados | finishes



horizontal

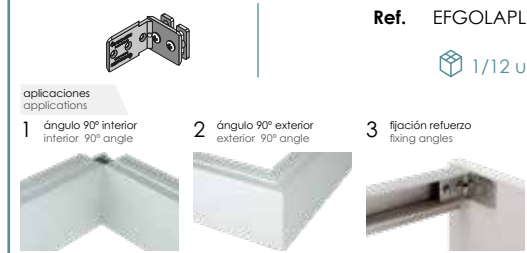


vertical



accesorios | accessories

escuadra fijación gola plano | fixing angle for flat gola



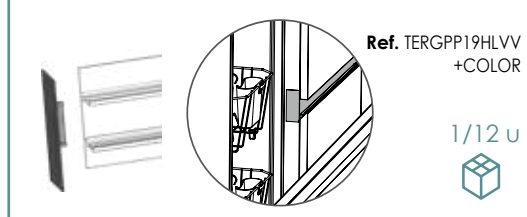
esquina chaflán | chamfered corner



terminal esquina 90° | external 90° corner



terminal intermedio para hueco lavavajillas | exterior intermediate cap for dishwasher



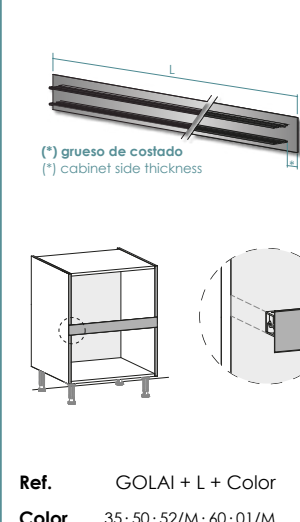
ventilación inducción gola plano | vent grille set - induction gola



pletina de unión gola plano | connector plate for flat gola



perfil intermedio a medida | custom-fitted intermediate profile



perfil gola tradicional | traditional gola profile



perfil gola tradicional superior-lateral | upper-side traditional gola profile

<b>Ref.</b>	TGOLATD19S + Color	<b>L.</b>	3000 mm
<b>Color</b>	35 · 50 · 52/M · 60 · 01/M		14 u

Perfiles plastificados individualmente  
Individually packed profiles

perfil gola tradicional intermedio | intermediate traditional gola profile

<b>Ref.</b>	TGOLATD19I + Color	<b>L.</b>	3000 mm
<b>Color</b>	35 · 50 · 52/M · 60 · 01/M		12 u

Perfiles plastificados individualmente  
Individually packed profiles

clip sujeción-compensación | fixing-balancing clip

**Ref.** CLIPGOLA  
1/100/300 u

Suplemento | Spacer 1 mm

**Ref.** SUPCLIPGOLA1  
1/100/300 u

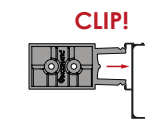
Suplemento | Spacer 3 mm

**Ref.** SUPCLIPGOLA3  
1/100/300 u

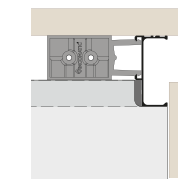
acabados | finishes



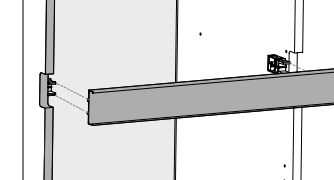
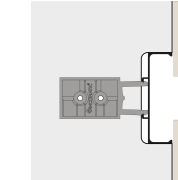
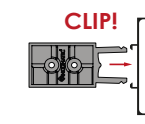
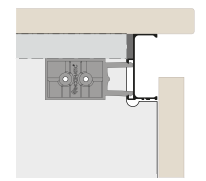
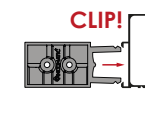
horizontal



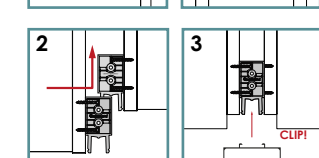
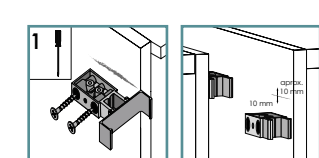
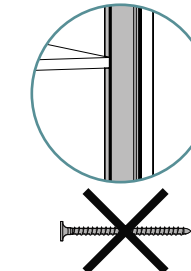
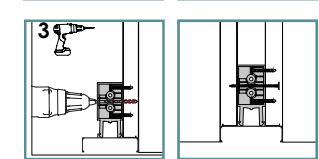
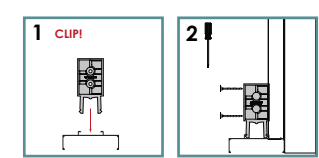
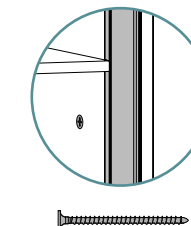
option 1



option 2



vertical



accesorios | accessories

**unión interior 90°** | interior angle 90°

<b>Ref.</b>	UNIGT19SINT90+COLOR
<b>Color</b>	35 · 50 · 52/M · 60 · 01/M

1/12 u

**terminal intermedio interior** | interior intermediate cap

<b>Ref.</b>	TERGT19IIN+COLOR
<b>Color</b>	35 · 50 · 52/M · 60 · 01/M

1/12 u

**unión chaflán 90°** | chamfered corner 90°

<b>Ref.</b>	UNICHAGT19SIN90 +COLOR
<b>Color</b>	35 · 50 · 52/M · 60 · 01/M

1/12 u

**terminal intermedio exterior** | exterior intermediate cap

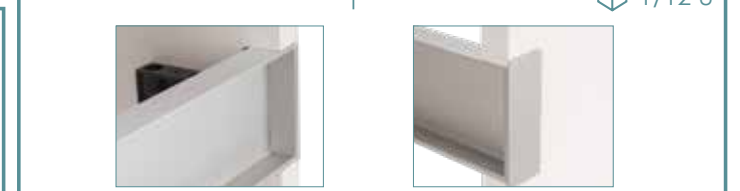
<b>Ref.</b>	TERGT19IEX+COLOR
<b>Color</b>	35 · 50 · 52/M · 60 · 01/M

1/12 u

**unión exterior 90°** | exterior angle 90°

<b>Ref.</b>	UNIGT19SEXT90+COLOR
<b>Color</b>	35 · 50 · 52/M · 60 · 01/M

1/12 u



perfil gola customizable | customizable gola profile



perfil gola customizable superior-lateral | upper-side customizable gola profile

**Ref.** TGOLAPP19S + Color | **L.** 3000 mm  
**Color** 35 · 50 | 10 u  
 Perfiles plastificados individualmente  
 Individually packed profiles

perfil gola plano customizable intermedio | intermediate customizable gola profile

**Ref.** TGOLAPP19I + Color | **L.** 3000 mm  
**Color** 35 · 50 | 8 u  
 Perfiles plastificados individualmente  
 Individually packed profiles

clip sujeción-compensación | fixing-balancing clip

**Ref.** CLIPGOLA  
 1/100/300 u

Suplemento | Spacer 1 mm

**Ref.** SUPCLIPGOLA1  
 1/100/300 u

Suplemento | Spacer 3 mm

**Ref.** SUPCLIPGOLA3  
 1/100/300 u

acabados | finishes

**35**  
 plata mate  
 malt silver

**50**  
 inox mate - champagne  
 malt inox - champagne

personalización | customization

horizontal



vertical



accesorios | accessories

**terminal intermedio para hueco lavavajillas** exterior intermediate cap for dishwasher  
**Ref.** TERGPP19HLVV +COLOR  
 1/12 u

**pletina de unión** connector plate  
**Ref.** PUGOLA  
 1/12 u

**escuadra ángulo 90°** fixing angles 90°  
**Ref.** EFGOLAPL  
 1/12 u

aplicaciones applications  
 1 ángulo 90° interior interior 90° angle  
 2 ángulo 90° exterior exterior 90° angle





---

Practical ideas for cabinetry

© Famar Muebles, S.L. No se permite la reproducción parcial o total de este catálogo sin la autorización expresa. Todos los derechos reservados. Mayo de 2019

Los colores de producto mostrado pueden tener variaciones con la realidad

© Famar Muebles, S.L. No part of this catalogue may be reproduced by any means without the written permission of the publisher. All rights reserved. May 2019

Colours shown within this brochure may vary slightly from the actual colours.

© Famar Muebles, S.L. Aucun extrait de cette publication ne peut être reproduit, par quelque procédé que ce soit, sans l'accord écrit préalable de l'éditeur. Mai 2019

Les couleurs reproduits dans cette brochure peuvent différer des couleurs réelles.

